

Eskom Holdings (SOC) Ltd
-Gauteng Operating Unit



ENVIRONMENTAL MANAGEMENT PROGRAMME

**FOR THE CONSTRUCTION OF THE PELLY-FAIRFIELD
(DINOKENG) 132KV POWERLINE WITHIN THE CITY OF
TSHWANE METROPOLITAN MUNICIPALITY, GAUTENG
PROVINCE**

GIBB REF: J34156

DEA REF: 14/12/16/3/3/1/1357

June 2015



People • Expertise • Excellence

ENVIRONMENTAL MANAGEMENT PROGRAMME FOR THE CONSTRUCTION OF THE PELLY-FAIRFIELD (DINOKENG) 132KV POWERLINE WITHIN THE CITY OF TSHWANE METROPOLITAN MUNICIPALITY, GAUTENG PROVINCE

TABLE OF CONTENTS

1	Introduction	5
1.1	Applicable Documentation	8
1.2	Structure of the Environmental Management Programme	8
1.3	Objectives of the EMP	9
2	Functions and Responsibilities	10
2.1	General Guidelines	12
2.2	Awareness Training	13
2.3	Contractor Environmental Method Statements	14
2.4	Site Documentation	14
3	Environmental Management Requirements	16
3.1	Section A: Planning and Pre-construction Phase Activities	16
3.2	Section B: Construction Phase Activities	26
3.3	Section C: Operation Phase Activities	49
3.4	Section D: Decommissioning Phase Activities	51

ANNEXURES

1	DECLARATION OF UNDERSTANDING BY THE DEVELOPER.
2	DECLARATION OF UNDERSTANDING BY THE ENGINEER.
3	DECLARATION OF UNDERSTANDING BY THE CONTRACTOR.
4	METHOD STATEMENT. <ul style="list-style-type: none">• ECO / ENGINEER DECLARATION FOR METHOD STATEMENTS.
5	ENVIRONMENTAL INCIDENTS REGISTER.

CONTACT DETAILS OF RESPONSIBLE PERSONS

Proponent Details

Name of Proponent: Eskom Holdings (SOC) Ltd, Eskom Distribution – Gauteng Operating Unit (Eskom)
Contact person: Charmaine Mare
Designation: Environmental Manager, Land Development
Physical Address: Menlyn 4 Level 0, Gobie Street, Extension 1, Newlands, 0081
Postal Address: P.O. Box 36099
Menlo Park
Tel: 012 484 5141
Fax: 086 667 3961
E-mail: marecc@eskom.co.za



Details of Environmental Assessment Practitioner

Name of Consultant: GIBB (Pty) Ltd
Contact person: Ms Umeshree Naicker
Physical Address: 14 Eglin Road, Sunninghill, 2191
Postal Address: P.O. Box 2700, Rivonia
Tel: 011 519 4701
Fax: 011 807 5670
E-mail: unaicker@gibb.co.za



Details of Environmental Authorities

Department Name: National Department of Environmental Affairs
Contact person: Mmatlala Rabothata
Physical Address: Environment House 473 Steve Biko Road, Pretoria, 0001
Postal Address: Private Bag X447, Pretoria, 0001
Tel: 012 399 9372
Fax: ---
E-mail: mrabothata@environment.gov.za



GLOSSARY OF TERMS, DEFINITIONS AND ABBREVIATIONS

Construction Activity	A construction activity is any action taken by the Contractor, his subcontractors, suppliers or personnel during the construction process.
Contractor	That main organisation appointed by the Developer, through the Project Manager, to undertake construction activities on the site.
Demolition	The tearing down of buildings and other structures: the opposite of construction.
Developer	Eskom Holdings (SOC) Ltd, Eskom Distribution – Gauteng Operating Unit (Eskom)
DWS	Department of Water and Sanitation
EAP	Environmental Assessment Practitioner
ECO	Environmental Control Officer. The ECO monitors compliance with the EMPr during the construction phase and advises the Project Manager on environmental matters relating to construction.
EMPr	Environmental Management Programme: The EMPr for the project sets out general instructions that will be included in a contract document for the construction phase of the project. The EMPr will ensure the construction activities are conducted and managed in an environmentally sound and responsible manner.
Environment	Means the surroundings within which humans exist and that are made up of: <ul style="list-style-type: none"> a. The land, water and atmosphere of the earth; b. Micro-organisms, plant and animal life; c. Any part or combination of a) and b) and the interrelationships among and between them; and d. The physical, chemical, aesthetic and cultural properties and conditions of the foregoing that influence human health and well-being.
Environmental Specifications	Instructions and guidelines for specific construction activities designed to help prevent, reduce and/or control the potential environmental implications of these construction activities.
DEA	Department of Environmental Affairs
I&AP(s)	Interested and Affected Party(ies)

Method Statement	<p>A written submission by the Contractor to the Project Manager in response to the Specification setting out the plant, materials, labour, timing and method the Contractor proposes using to carry out an activity. The Method Statement shall cover applicable details with regard to:</p> <ul style="list-style-type: none"> • Construction procedures; • Materials and equipment to be used; • Getting the equipment to and from site; • How the equipment/material will be moved while on site; • How and where material will be stored; • The containment (or action to be taken if containment is not possible) of leaks or spills of any liquid or solid material that may occur; • Timing and location of activities; • Compliance/ non-compliance with the Specifications; and • Any other information deemed necessary by the PM.
MSDS	Material Safety Data Sheet
Project	This refers to all construction activities associated with the proposed activities.
PM	Project Manager: Appointed firm responsible for overall management of the construction phase of the project including the management of all contractors.
PPE	Personal Protective Equipment
Rehabilitation	Rehabilitation is defined as the return of a disturbed area, feature or structure to a state that approximates to the state (where possible) that it was before disruption, or to an improved state.
SHE	Safety, Health and Environment
Solid Waste	Means all solid waste, including construction debris, chemical waste, excess cement/concrete, wrapping materials, timber, tins and cans, drums, wire, nails, food and domestic waste (e.g. plastic packets and wrappers).
SSC	Species of Special Concern

1 INTRODUCTION

Eskom Holdings (SOC) Ltd, Eskom Distribution – Gauteng Operating Unit (Eskom) proposes to construct a 20km 132kV powerline extending from the existing Pelly 132kV powerline in the western end of the study area to the existing Fairfield 132kV powerline in the eastern end of the study area within Dinokeng, City of Tshwane Metropolitan Municipality (CTMM), Gauteng Province

Eskom has applied for environmental authorisation from the National Department of Environmental Affairs (DEA) for the proposed construction of the proposed Pelly-Fairfield 132kV powerline. As such GIBB (Pty) Ltd (GIBB) has been appointed as the Independent Environmental Assessment Practitioner (EAP) to undertake the Basic Assessment and associated public participation process for the proposed development.

This Environmental Management Programme (EMPr) was compiled as part of the Environmental Authorisation Process, required by the National Environmental Management Act, 1998 (Act No. 107 of 1998) (NEMA). The EMPr will look at the potential environmental impacts the proposed development could have on the environment and which mitigation and monitoring procedures will need to be put in place to manage these impacts with the smallest environmental footprint possible.

The proposed project, triggers listed activities 10(i), 11(xi), and 22(ii) of Government Notice Regulation (GNR) 544 of 2010 and listed activity 4(b)(i)(iii)(viii), 12(b) and 14(a)(i) of GN R 546 of 2010 published in terms the National Environmental Management Act, 1998 (Act No. 107 of 1998), which reads as follows:

GNR 544:

10(i): The construction of facilities or infrastructure for the transmission and distribution of electricity, **outside urban areas or industrial complexes with a capacity of more than 33 but less than 275 kilovolts.**

The proposed Pelly-Fairfield distribution line will be 132kV.

11(xi): The construction of **infrastructure or structures covering 50 square metres or more**, where such construction occurs within a watercourse or within 32 metres of watercourse, measured from the edge of a watercourse excluding where such construction will occur behind the development setback line.

Several watercourses may be crossed along the powerline route, and as such pylons may be constructed within 32 metres of the watercourse.

22(ii): The construction of a road, outside urban areas, **where no reserve exists and where the road is wider than 8 metres.**

Access road may be required at certain sections to access the powerline.

GNR 546:

4(b)(i)(iii)(viii): The construction of a road wider than 4 metres with a reserve less than 13.5 metres in **Gauteng** in a **protected area** identified in terms of **NEMPAA**, in **sensitive areas** as identified in an environmental management framework contemplated in Chapter 5 of the Act and as adopted by the competent authority; as well as in any declared **protected area** including **Municipal** or **provincial Nature Reserves** as contemplated by the Environment Conservation Act, 1989 (Act No. 73 of 1989) and the Nature Conservation Ordinance (Ordinance 12 of 1983).

Access roads may be required along certain sections to access the powerline within Gauteng, where such roads and powerline alignments may extend through sensitive and protected areas.

12(b): The clearance of an area of 300 square metres or more of vegetation where 75% or more of the vegetative cover constitutes indigenous vegetation within a **critical biodiversity area** identified in bioregional plans.

Vegetation clearance would be required for the proposed construction of the Pelly-Fairfield 132kV powerline, which extends through an identified Critical Biodiversity Area.

14(a)(i): The clearance of an area of 5 hectares or more of vegetation where 75% or more of the vegetative cover constitutes indigenous vegetation in **Gauteng, outside all urban areas.**

Vegetation will be cleared to allow for the erection of the pylons. Bush clearing of approximately 16m wide (8m on either side of the powerline) will be required for the 132kV powerline.

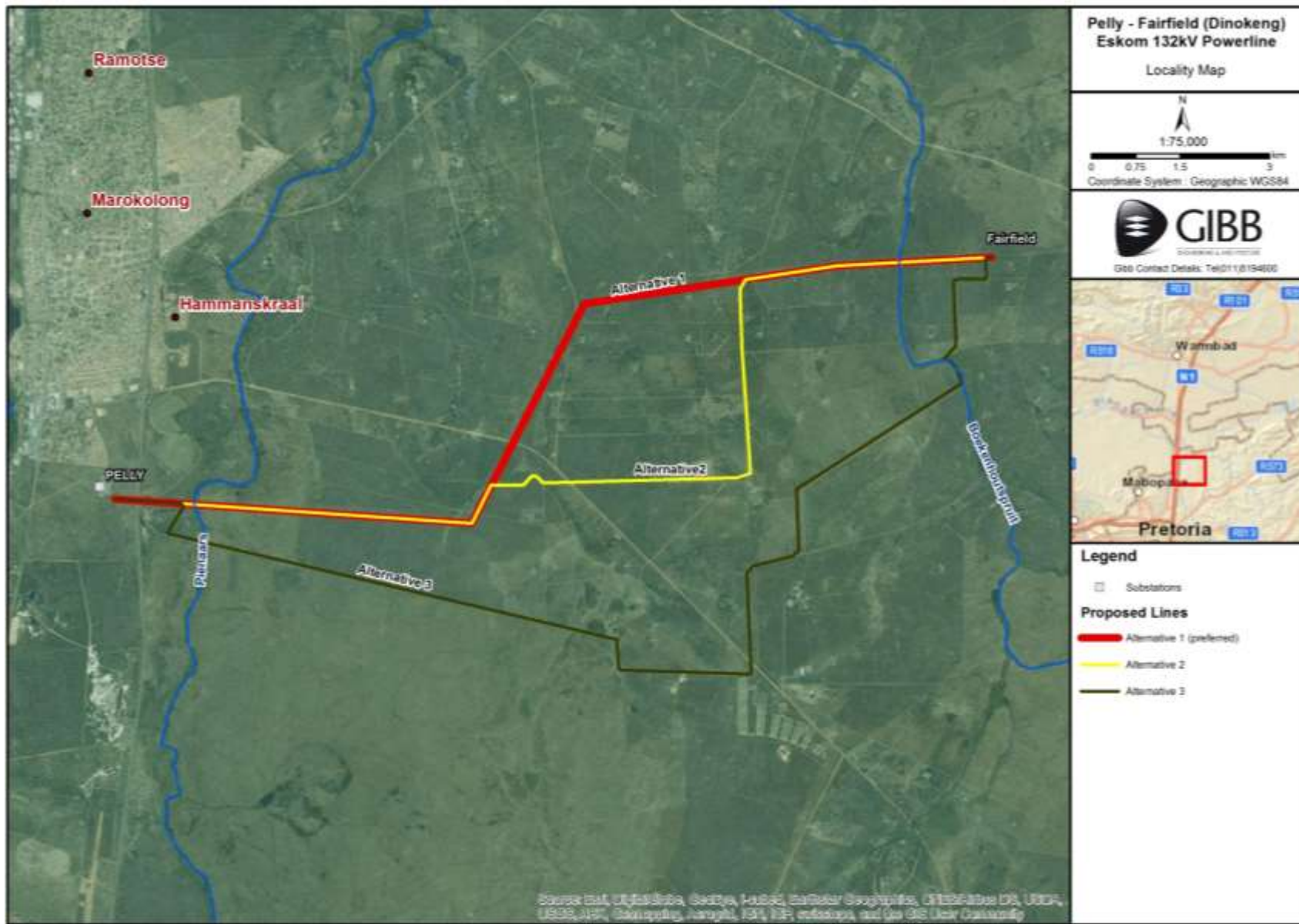


Figure 1: Locality map of the proposed Pelly-Fairfield 132kV powerline alignment

1.1 **Applicable Documentation**

The following environmental documentation is applicable for the project, and should be read in conjunction with this Environmental Management Programme (EMPr):

- Basic Assessment Report for the Pelly-Fairfield 132kV powerline. Cognisance of the Environmental Authorisation must be taken once it has been issued. Where necessary, this EMPr must be amended to comply with the Environmental Authorisation;
- Permits or licences that may need to be acquired at the time of construction such as a Water Use License in terms of the National Water Act, 1998 (Act No. 36 of 1998); and
- All acts, ordinances and by-laws relevant to the proposed project.

1.2 **Structure of the Environmental Management Programme**

This EMPr provides mitigation and management measures for the following phases of the project:

- **Construction Phase**
This section of the EMPr provides management principles for the construction phase of the project. Environmental actions, procedures and responsibilities as required within the construction phase are specified. These specifications shall form part of the contract documentation and, therefore, the Contractor will be required to comply with the specifications to the satisfaction of the Project Co-ordinator and Environmental Control Officer, in terms of the construction contract.
- **Operation Phase**
This section of the EMPr provides management principles for the operation phase of the project. Environmental actions, procedures and responsibilities as required from Eskom within the operation phase are specified.
- **Decommissioning Phase**
Due to the nature of the project and its operational lifespan, decommissioning is not envisaged. This EMPr will have to be updated when decommissioning is to take place.

It should be noted that this EMPr is a dynamic document which should be updated as and when required. Any amendments made must be submitted to both the Environmental Control Officer and Proponent for approval prior to implementation.

1.3 Objectives of the EMPr

The EMPr has the following objectives:

- To outline functions and responsibilities of responsible persons;
- To state standards and guidelines which are required to be achieved in terms of environmental legislation;
- To outline mitigation measures and environmental specifications which are required to be implemented for all phases of the project in order to minimise the extent of environmental impacts, and to manage environmental impacts; and
- To prevent long-term or permanent environmental degradation.

2 FUNCTIONS AND RESPONSIBILITIES

Formal responsibilities are necessary to ensure that key procedures are executed. Specific responsibilities of the various personnel for this project are detailed below.

The Developer / Proponent:

- The proponent (Eskom) is ultimately accountable for ensuring compliance to the EMPr and conditions contained in the Environmental Authorisation (EA). The ECO must be contracted by the developer (Eskom) as an independent appointment to objectively monitor implementation of relevant environmental legislation, conditions of EA's, and the EMPr for the project.
- The developer is further responsible for providing and giving a mandate to enable the ECO to perform responsibilities. The developer must ensure that the ECO is integrated as part of the project team.

The Consulting Engineer (CE):

- Contracted by the developer to design and specify the project engineering aspects. Generally the engineer runs the works contract. The CE may also fulfil the role of Project Manager on the proponent's behalf.

Project Manager (PM):

- The Project Manager has over-all responsibility for managing the project, contractors, and consultants and for ensuring that the environmental management requirements are met. The CE may also act as the PM. All decisions regarding environmental procedures must be approved by the PM. The PM has the authority to stop any construction activity in contravention of the EMPr in accordance with an agreed warning procedure.

Engineers Representative (ER):

- The consulting engineer's representative on site. Has the power/mandate to issue site instructions and in some instances, variation orders to the contractor, following request by the EO or ECO. The ER oversees site works, liaison with Contractor and ECO.

Environmental Officer / Environmental Manager (EO):

- Appointed by the Consulting Engineers as their environmental representative on site. The EO is not independent but must rather act on behalf of the consulting engineers with the mandate to enforce compliance under the project contract, which must include the EMPr. The EO has the directive to issue non-conformance and hazard certificates. Further, in terms of accepted

industry practice the EO could issue the equivalent of a “cease works” instruction only in exceptional circumstances where serious environmental harm has been or is about to be caused i.e. in cases of extreme urgency and then only when the ER is absent.

- The EO must form part of the project team and be involved in all aspects of project planning that can influence environmental conditions on the site. On certain types of activities, such as linear developments (fences, pipelines, etc.), the EO must also be the liaison between the contractor and landowners (where required).
- The EO must attend relevant project meetings, conduct daily inspections to monitor compliance with the EMPr, and be responsible for providing reports and feedback on potential environmental problems associated with the development to the project team and ECO.
- The EO must convey the contents of this EMPr to the Contractor site team and discuss the contents in detail with the Contractor as well as undertake to conduct an induction and an environmental awareness training session prior to site handover to all contractors and their workforce.
- The EO must be suitably experienced with the relevant qualifications and preferably competent in construction related methods and practices.

The Environmental Control Officer (ECO):

- An independent appointment to objectively monitor implementation of relevant environmental legislation, conditions of EA, and the EMPr for the project. The ECO must be on site prior to any site establishment and must endeavour to form an integral part of the project team.
- The ECO must be proactive and have access to specialist expertise as and when required, these include geologists, heritage specialists, etc.
- The ECO must conduct audits on compliance to relevant environmental legislation, conditions of EA, and the EMPr for the project. The size and sensitivity of the development, based on the EIA, and the EA will determine the frequency at which the ECO will be required to conduct audits. (A minimum of a monthly site inspection must be undertaken).
- The ECO must be the liaison between the relevant authorities and the project team. The ECO must communicate and inform the developer and consulting engineers of any changes to environmental conditions as required by relevant authoritative bodies. The ECO must ensure that the registration and updating of all relevant EMPr documentation is carried out.
- The ECO must be suitably experienced with the relevant environmental management qualifications and preferably competent in construction related methods and practices.
- The ECO must handle information received from whistle blowers as confidential and must address and report these incidences to the relevant Authority as soon as possible.

The Contractor:

- Is to ensure that the environmental specifications of this document (including any revisions, additions or amendments) are effectively implemented. This includes the on-site implementation of steps to mitigate environmental impacts.
- Will ensure that all Employees and co-contractors employed comply with the requirements and provisions of the EMPr.
- Prepares method statements.
- Monitors environmental performance and conformance with the specifications contained in this document during daily site inspections.
- Discusses implementation of and compliance with this document with staff at routine site meetings.
- Reports progress towards implementation of and non-conformances with this document at site meetings with ECO.
- Will notify the ECO of the anticipated programme of works and fully disclose all details of activities involved.
- Will ensure that suitable records are kept and that the appropriate documentation is available to the ECO.
- Will Notify the ECO of all incidents, accidents and transgressions on site with respect to environmental management as well as requirements of the EMPr and corrective actions/remedial action taken.
- Reports and record all accidents and incidents resulting in injury or death.
- Informs the ECO of problems arising when implementing the EMPr and ways of improving the EMPr.
- Informs the ECO of any complaints received.

2.1 General Guidelines

The following measures provide guideline solutions to frequently anticipated issues on most development activities:

- The prevention of any site degradation due to non-compliance, administrative or financial problems, and inactivity during the construction phase, illegal activities, delays caused by archaeological finds etc. is ultimately the responsibility of the applicant/developer. Section 28, National Environmental Management Act, 1998 (Act No. 107 of 1998) [NEMA].
- The study area must be clearly defined according to the project authorisation. All workforce members and other construction personnel are not to go beyond the designated footprint.
- The Contractors must adhere to agreed and approved access points and haul roads.
- No camping is allowed on any private property.
- Damage to private or public property such as fences, gates and other

infrastructure may occur at any time. All damage to be repaired immediately and to the satisfaction of the owner.

- The Contractor must adhere to all conditions of contract including this EMPr.
- Proper planning of the construction process must be undertaken to allow for disruptions due to rain and very wet conditions.
- All private and public manmade structures near the project site must be protected against damage at all times and any damage must be rectified immediately.
- Proper site management and regular monitoring of site works.
- Proper documentation and record keeping of all complaints and actions taken.
- Regular site inspections and good control over the construction process throughout the construction period.
- A positive attitude towards Environmental Management by all site personnel must be motivated through regular and effective awareness and training sessions.
- An EO, on behalf of the Contractor, is to be appointed to implement this EMPr. The EO and not the Contractor is to deal with any landowner related matters.
- Environmental Audits to be carried out prior, during and upon completion of construction.

2.2 Awareness Training

The EO or ECO where an EO is not appointed, is responsible for ensuring everyone on site is given an environmental awareness induction session which not only clearly defines what the environment is and gives specifics detailing the local environment but outlines the requirements of the EMPr as a management tool to protect the environment.

Refresher courses must be conducted as and when required. The EO must ensure daily toolbox talks include alerting the workforce to particular environmental concerns associated with the tasks for that day or the area/habitat in which they are working. Awareness posters and a hand out must be produced to create awareness throughout the site (as needed).

2.3 Contractor Environmental Method Statements

Method Statements are written submissions to the Engineer by the Contractor, in collaboration with his/her EO, in response to a request by the Engineer. The Method Statements set out the plant, materials, labour and method that the contractor proposes using to carry out an activity, identified by the EO and/or Engineer. The Method Statements contain the appropriate detail such that the EO and Engineer are able to assess whether the Contractor's proposal is in accordance with the requirements of the EMPr. The contractor must sign each Method Statement along with the EO and Engineer to formalise the approved Method Statement.

All Method Statements including those which may be required as ad hoc or emergency construction method statements must be submitted to the Engineer for approval prior to the commencement of the activity.

Any changes to the method of works must be reflected by amendments to the original approved Method Statement. Any changes in this regard must be approved by the EO and Engineer on the understanding that such changes are environmentally acceptable and in line with the requirements of this EMPr.

The pro forma Method Statements attached (amongst others) must be used and method statements for the following activities must be submitted to the EO, ECO and Engineer for approval before construction commences *inter alia*:

- Solid waste management;
- Crew camps and construction lay down areas;
- Cement and concrete batching;
- Dust control;
- Noise control
- Hydrocarbon and emergency spills procedures;
- Fire Management; and
- Diesel tanks and refuelling procedures (if applicable).

2.4 Site Documentation

The following is a list of documentation amongst others, which must be held on site and must be made available to the ECO and/or Approving Authority on request.

- Site daily diary /instruction book/ Incident reports;
- Records of all remediation / rehabilitation activities;
- Copies of ECO reports (management and monitoring);
- Environmental Management Programme (EMPr);
- Complaints register;
- Method statements; and

- Environmental Authorisation.

2.4.1 Pro forma Documentation

(a) Prior to the commencement of construction activities

The following attached *pro forma* documentation is to be filled out and is binding to the EMPr and project contract and includes, but is not limited to the following:

- Declaration of understanding by the Developer;
- Declaration of understanding by the Engineer;
- Declaration of understanding by the Contractor;
- Method statements; and
- ECO / Engineer approval for method statements.

(b) During construction activities

The following attached pro forma documentation is to be filled out and maintained. These are binding to the EMPr and project contract. They include, but are not limited to, the following:

- Amended Method Statements;
- ECO / Engineer approval for amended method statements;
- Environmental incidents; and
- Records of all remediation / rehabilitation activities.

3 ENVIRONMENTAL MANAGEMENT REQUIREMENTS

3.1 Section A: Planning and Pre-construction Phase Activities

A.1. Project contract and programme		Responsibility	Frequency	Notes
<p>Contingencies for minimising negative impacts anticipated to occur during the construction phase needs to be implemented.</p> <p>Ensure environmental awareness and formalise environmental responsibilities and implementation</p>	<p>A.1.1 Project contract and programme</p> <p>(a) The EMPr must be included as part of the tender documentation thereby making it part of the enquiry document to make the recommendations and constraints, as set out in this document, enforceable under the general conditions of contract.</p> <p>(b) A copy of this EMPr must be available on site. The Contractor must ensure that all the personnel on site, sub-contractors and their team, suppliers, etc. are familiar with and understand the specifications contained in the EMPr.</p>	Proponent	-	

A.2. Appointments and duties of project team		Responsibility	Frequency	Notes
	<p>A.2.1 Pro forma document and contracts</p> <p>(a) The contact details for the ECO, Contractor and SHE officer must be completed as part of the pro-forma documents and a copy kept on site. This document must be made available to the approving authority on request.</p> <p>(b) Subcontractor(s) contracts with the principle contractor must contain a clause to the effect that the disposal of all construction-generated refuse / waste to an officially approved dumping site is the responsibility of the subcontractor in question and that the subcontractors are bound to the management activities stipulated in this EMPr.</p>	Proponent	Once - off	
	<p>A.2.2 Roles and responsibilities</p> <p>(a) Before construction activities commence, role players must have a clear indication of to their role in the implementation of this EMPr.</p>	Proponent	Once - off	

A.3. Method Statements		Responsibility	Frequency	Notes
	<p>A.3.1 Method Statements</p> <p>(a) Certain method statement must be provided by the contractor. All activities which require method statements may only commence once the method statements have been approved by the engineer and or ECO as applicable.</p> <p>(b) Where applicable, the contractor will provide job-specific training on an ad hoc basis when workers are engaged in activities, which require method statements.</p>	PM/ Contractor	Prior to commencing activities requiring method statements, on site.	Approved method statements and relevant pro forma documents along with training records to be kept on file on site.
A.4. Emergencies, non-compliance and communication		Responsibility	Frequency	Notes
	<p>A.4.1 Emergencies and communication</p> <p>(a) The contractor must provide method statements on the protocols to be followed, and contingencies to be put in place for the following potential incidents before construction may begin: Contamination of natural water resources from spills; contamination of soils from spills; and fire.</p> <p>(b) Communication in emergencies must follow</p>	Contractor	On-going	

	the suggested lines of communication.			
	<p>A.4.2 Non-compliance</p> <p>The contractor understands that failure to adhere to the requirements of the EMPr will result in fines over and above the costs incurred for any remediation required as result of the specific non-compliance.</p>	Contractor	On-going	
<p>A.5. Construction Camp set up</p> <p>(if required)</p>		Responsibility	Frequency	Notes
<p>Careful planning of the construction camp can ensure that the time and costs associated with environmental management and rehabilitation are reduced. Therefore the camp should be established on previously disturbed areas such as school / municipal show grounds etc.</p>	<p>A.5.1 Layout</p> <p>(a) The choice of the Contractor's camp requires the Project Manager's and ECO's permission and must ensure that the camp is located in an area that will ensure a minimum impact.</p> <p>(b) The camp should be located on already disturbed areas, such as school grounds, sports fields or previous construction camp sites.</p> <p>(c) The contractor should submit plans of exact location, extent and construction details of the temporary construction camp facilities to the</p>	PM/ Contractor	Prior to site establishment	

	<p>Project Manager for approval, prior to establishment of the camp.</p> <p>The layout plans should reflect the proposed camp's location in relation to any existing infrastructure (water mains, electricity cables, sewage mains, etc.) on site.</p> <p>Access to the construction camp must be through an existing route that is clearly demarcated and agreed upon.</p> <p>(d) The construction camp can comprise of the following (as required):</p> <ol style="list-style-type: none"> a. Site office b. Ablution facilities c. Designated first aid area d. Eating area e. Laydown areas 			
	<p>A.5.2 Ablutions</p> <p>(a) Ablution facilities must be provided and should be located within the construction camp at a ratio of 1:20 workers.</p>	PM/ Contractor	-	
	<p>A.5.3. Provision for camp waste disposal</p> <p>(a) Bins and skips shall be provided at convenient intervals for disposal of waste within the construction camp/site.</p> <p>(b) Recycling and provision of separate waste</p>	PM/ Contractor	On-going	

	receptacles for different types of waste should be encouraged.			
A.6. Establishing storage areas		Responsibility	Frequency	Notes
Storage areas can be hazardous and unsightly. These storage areas can also cause environmental pollution if not designed and managed properly.	<p>A.6.1. General Substances and Materials</p> <p>(a) When deciding on the location of temporary stockpiles, the following needs to be considered:</p> <ul style="list-style-type: none"> • road access, • length of time the stockpile will exist. <p>(b) Additionally all stockpiles should be located away from sensitive ecosystems (wetlands, rivers and drainage lines) and protected from the prevailing winds.</p> <p>(c) Storage areas must be designated, demarcated and fenced if necessary.</p> <p>(d) Storage areas should be secured, to minimize the risk of crime and contamination.</p>	EO/ ECO approval	During site establishment.	
	<p>A.6.2 Hazardous Substances and Materials</p> <p>(a) Fuel must be stored in a bunded area with at least a volume of 110% of the tank.</p> <p>(b) No smoking shall be allowed in the vicinity of the fuel storage area. Erect at least one no-smoking warning sign, which is clearly visible at the fuel storage area, to warn all staff of associated dangers.</p>	EO/ ECO approval	During site establishment	

	<ul style="list-style-type: none"> (c) Provide adequate firefighting equipment at or close to the fuel storage and dispensing area(s). (d) Keep fuel under lock and key at all times. (e) Hazardous chemical working/ refuelling areas must be bunded with an impermeable liner. (f) Ensure that there is always a supply of absorbent material readily available to absorb/break down any hydrocarbon spillage. (g) In the case of a spill, contaminated material must be removed from the site immediately and disposed of at an appropriate licensed hazardous waste facility. 			
A.7. Set up of waste management activities		Responsibility	Frequency	Notes
	<p>A.7.1 Waste management</p> <ul style="list-style-type: none"> (a) A dedicated area must be allocated for waste sorting and storage. (b) Individual waste skip or wheelie bins for different types of waste should be provided (if none currently exist). 	EO/ ECO	During site establishment	
A.8. Education of site staff on general Environmental Conduct		Responsibility	Frequency	Notes
These points must be communicated to all staff prior	A.8.1. Environmental Education and	EO/ ECO	During staff induction and	Toolbox talks and

<p>to site establishment.</p>	<p>Awareness</p> <p>Ensure that all site personnel have a basic level of environmental awareness training. Topics covered should include:</p> <ul style="list-style-type: none"> • What is meant by ‘Environment’? • Why do we have to protect the environment? • How construction activities can impact on the environment. • How can these impacts be mitigated. • Awareness of emergency and spills response provisions. • Social responsibility during construction e.g. being considerate to local residents. <p>It is the contractor’s responsibility to provide the site foreman with no less than 1 hour’s environmental training (per week or as directed by the ECO) and to ensure that the foreman has sufficient understanding to pass the information onto the construction staff.</p> <p>(a) Translators are to be used where necessary. (b) The use of pictures and real-life examples is encouraged as these are easier to remember. (c) The need for a ‘clean site’ policy also needs to be explained to the construction workers.</p>		<p>weekly Talks</p> <p>Toolbox</p>	<p>lunchtime Q&A.</p>
-------------------------------	--	--	--	---------------------------

	<p>A.8.2. Worker Conduct on Site</p> <p>Under no circumstances may open areas or surrounding bush be used as toilet facilities.</p> <p>A general regard for the social and ecological well-being of the site and adjacent areas is expected of the site staff. Workers need to be made aware of the following general rules:</p> <ul style="list-style-type: none"> • No alcohol/drugs to be present on site. • No fire arms allowed on site or in vehicles transporting staff to/from the site (unless by security personnel. • Construction staff is to make use of facilities provided for them, as opposed to ad hoc alternatives. 	PM/ Contractor	During staff induction, followed by on-going monitoring.	
A.9. Water Quality		Responsibility	Frequency	Notes
Incorrect disposal of substances and materials and polluted run-off can cause serious negative impacts on surrounding water resources.	<p>A.9.1. Water Quality</p> <p>(a) Equipment and machinery must be in good operation condition, clean (power washed), free of leaks, excess oil and grease. The equipment must be washed/ cleaned in the wash bays or demarcated areas only.</p> <p>(b) Ensure that machinery is operated by a skilled driver who has been trained to use it correctly and who will be able to identify if something is wrong with the engine and</p>	EO/ ECO	During site set up.	

	conduct regular inspections identifying engine related leaks.			
A.10. Security and safety		Responsibility	Frequency	Notes
	<p>A.10.1. Risk Associated with materials on site</p> <p>(a) Material stockpiles or stacks such as cement, steel, bricks, corrugated iron sheeting, plastic piping, etc. must be stable and well packed to avoid collapse and possible injury to site workers, stockpiles must also be covered to avoid seepage and ground water pollution (where applicable).</p> <p>(b) No materials are to be stored in unstable or high risk areas such as in close proximity of the entrance road, excavated areas, etc.</p>	PM/ Contractor	On-going	

3.2 Section B: Construction Phase Activities

B.1. Site Access		Responsibility	Frequency	Notes
	<p>B.1.1 Access to the site</p> <p>(a) Existing access roads must be used as far as possible. Please note that all existing access roads utilised will have to be maintained to the satisfaction of the landowners.</p> <p>(b) If access roads must pass through drainage lines, the footprint should be as small as possible.</p> <p>(c) A road management plan should be compiled, showing allocated access points and roads, to prevent tracks all over the landscape.</p> <p>(d) Construction vehicles must be limited to a speed of 20km/h on access roads and keep to the speed limit on public roads.</p>	Proponent	-	
B.2. Maintenance of construction camp (as applicable)		Responsibility	Frequency	Notes
	<p>B.2.1 Ablution</p> <p>(a) Portable chemical toilets should be acquired and placed at the construction site(s). At least 1 toilet to 20 workers should be erected.</p> <p>(b) Chemical toilets to be used on site, grey water should be disposed of off-site at a</p>	Proponent	As per Eskom current procedures or as directed by the EO / PM	

	<p>licensed waste treatment works.</p> <p>(c) The toilets should be located within the construction camp site(s) or as directed by the ECO / PM.</p> <p>(d) Construction camps, toilets and temporary laydown areas should be located at least 30m away from the edge of any wetlands and drainage lines</p>			
	<p>B.2.2. Eating Areas</p> <p>(a) Eating areas should be serviced and cleaned regularly to ensure the highest possible standards of hygiene and cleanliness.</p> <p>(b) All litter throughout the site should be picked up and placed in the appropriate recycling bins provided.</p>	Contractor	Daily and Weekly inspection	
	<p>B.2.3. Housekeeping</p> <p>(a) The contractor shall ensure that his camp and working areas are kept clean and tidy at all times.</p> <p>(b) The contractor shall implement good housekeeping practises to minimise the visual impact of waste and discarded materials.</p>	Contractor	Daily	

B.3. Staff Conduct		Responsibility	Frequency	Notes
	<p>B.3.1. Environmental Education and Awareness/ Safety</p> <p>(a) The contractor must monitor the performance of construction workers to ensure that all the topics that were covered in the induction meeting is properly understood, and followed.</p> <p>(b) HIV & AIDS awareness talks should be given at the construction camp sites on a regular basis by the relevant personnel.</p>	Contractor	Daily/ Weekly	Toolbox talks and lunch time Q&A.
B.4. Waste Management		Responsibility	Frequency	Notes
<p>Activities in the construction site such as office work, usage of construction materials, etc., generate different types of waste that requires to be managed properly. These wastes could result in environmental pollution such as soil contamination/ pollution or health hazards to employees working on-site, if not managed properly.</p>	<p>B.4.1 On-site waste management</p> <p>(a) Waste is grouped into “general” or “hazardous”, depending on its characteristics. The classification determines the handling methods and the ultimate disposal of the material. The Contractor/ ECO must classify waste into general or hazardous based on the toxicity or hazard nature of waste.</p> <p>(b) Waste must be placed in the designated or marked skips/ bins which must be emptied on a regular basis by a contracted waste collector. These should remain within the demarcated areas and should be designed to prevent refuse from being blown out by wind.</p> <p>(c) Separation of waste and recycling of paper, glass, cans, scrap, metals, plastic bottles, etc., must be considered prior to disposal.</p>	Contractor/ EO/ PM	<p>During the start-up of construction on site and on-going thereafter.</p> <p>During waste collection</p> <p>Prior to signing an agreement with the waste removal contractor.</p>	ECO and PM needs to ensure that all construction staff is educated on waste management.

	<p>The disposal at the landfill site should be considered as the last option, after having taken into consideration the prevention of waste generation, reduction waste generation, reuse and recycling.</p> <p>(d) Hazardous waste that require disposal (oily rags, used fuel/ oil, etc.) must be placed in a suitable leak proof skip or wheelie bin for disposal at an approved hazardous waste disposal facility.</p> <p>(e) The contractor is responsible for arranging the removal of all waste from site generated through construction activities. Waste must be removed to a registered, appropriate disposal and recycling facilities.</p> <p>(f) No burning and littering of waste on site should be allowed.</p> <p>(g) All wetlands and drainage lines should generally be treated as “no-go” areas and appropriately demarcated as such. No vehicles, machinery, personnel, construction materials, cement, fuel, oil or waste should be allowed into these areas without the express permission of and supervision by the ECO.</p> <p>(h) Keep waste in vermin proof bins with lids.</p> <p>(i) Request the following from the waste contractors that are used to collect waste:</p> <ul style="list-style-type: none"> • Copies of the weighbridge receipt from the waste removal contractor for all waste collected on site. 			
--	---	--	--	--

B.5. Construction vehicles/ equipment		Responsibility	Frequency	Notes
<p>Engine machines such as compressors, pumps, air conditioners and arc welders can have small leaks (usually oil) that can accumulate to become spills, which require clean-up. These leaks become more evident if the equipment remains in the same place for an extended period of time. Damaged fuel tanks, fuel hoses, and fuel pumps can be sources of significant fuel leaks. Hydraulic systems can blow gaskets or hoses resulting in large quantities of hydraulic fluid spilled to the ground.</p>	<p>B.5.1 Construction equipment</p> <ul style="list-style-type: none"> (a) Vehicles and machinery are to be kept in good working order and to meet manufactures specification for safety, fuel consumption and emission. (b) Should excessive emissions be observed, the site manager needs to implement an effective vehicle and equipment service and maintenance plan. (c) Vehicle parking and equipment storage must be done on a hardened and sealed surface area such that oil, fuel and other fluid leaks do not pollute soil or ground water sources. (d) Drip trays must be placed underneath vehicles when not in use. 	Contractor/ EO	On going	Contractor must follow a detailed checklist for machinery and equipment maintenance.
<p>Increased noise and dust emissions from construction vehicles carrying out construction activities may</p>	<p>B.5.2 Construction activities – increase in dust and noise generation</p> <ul style="list-style-type: none"> (a) Use existing roads to access the site in order to limit the amount of dust on site. General housekeeping should also be maintained. 	Contractor/ EO	On-going/ daily	Contractor/ EO must ensure that the necessary noise and dust control measures be implemented and applied throughout the entire construction

occur.	<ul style="list-style-type: none"> (b) Avoid unnecessary movement of transportation vehicles on site. (c) Apply appropriate dust suppression methods. (d) No potable water may be used for dust suppression (as far as is practically possible). (e) Construction time must be restricted to working hours (07:00-18:00) Monday to Friday excluding public holidays (unless prior permission is obtained from the adjacent landowners. (f) All noise and sounds generated during the proposed activity must comply with the relevant SANS codes and standards. (g) All construction equipment or machinery should be switched off when not in use. (h) Construction equipment must be kept in good working condition. (i) Plant and vehicles must be in good working order and visually inspected daily. (j) Use silencers on all equipment, where appropriate. 			phase of the project.
B.6. Emergency Response to spillages		Responsibility	Frequency	Notes
This section aims to provide measures to manage spillages from equipment used on site and measures for other construction materials handled on site.	<p>B.6.1 Emergency Response to spillages</p> <p>The contractor shall take into account the following prevention measures to be applied during spillages.</p> <ul style="list-style-type: none"> (a) Immediately repair all leaks of hydrocarbons, oil, etc. 	Contractor	During spillages	The ECO/ EO and contractor must ensure that the Emergency response procedure is well understood by all workers on site and that a summary is

	<ul style="list-style-type: none"> (b) Take reasonable measure to prevent further spills or leaks. (c) Dispose contaminated materials to a location designated thereto, for further disposal at a registered landfill site. (d) The contractor shall have its own spill response plan in the event of any spills (oil, fuel, hazardous materials) from his machinery or equipment used on site. 			available for site visitors.
<p>This section aims to provide measures to prevent pollution of the environment as well as to minimise the chances of transgression of the acts controlling pollution.</p>	<p>B.6.2 Oil and chemicals</p> <ul style="list-style-type: none"> (a) The contractor must provide method statements for the “handling & storage of oils and chemicals”, “fire”, and “emergency spills procedures”. (b) These substances must be confined to specific and secured areas within the contractor’s camp, and in a way that does not pose a danger of pollution even during times of high rainfall. These areas must be imperviously bunded with adequate containment (at least 110% the volume of the fuel) for potential spills or leaks (c) Drip trays (minimum of 10cm deep) (or appropriate alternative viz. eco-blocks) must be placed under all vehicles that stand for more than 24 hours. Vehicles suspected of leaking must not be left unattended, drip trays must be utilised. (d) The surface area of the drip trays will be dependent on the vehicle and must be large enough to catch any hydrocarbons that may leak from the vehicle while standing. (e) The depth of the drip tray must be 	Contractor	On-going/ daily	

	<p>determined considering the total amount/ volume of oil in the vehicle. The drip tray must be able to contain the volume of oil in the vehicle.</p> <p>(f) Spill kits must be available on site and in all vehicles that transport hydrocarbons for dispensing to other vehicles on the construction site. Spill kits must be made up of material/ product that is in line with environmental best practice (SUNSORB is a recommended product that is environmentally friendly).</p> <p>(g) All spilled hazardous substances must be contained in impermeable containers for removal to a licensed hazardous waste site, (this includes contaminated soils, and drenched spill kit material).</p>			
B.7. Cement handling		Responsibility	Frequency	Notes
<p>This section aims to provide measures to minimise the possibility of cement residue entering into the surrounding environment.</p>	<p>B.7.1 Concrete batching and mixing</p> <p>(a) The contractor must provide and maintain a method statement for “cement and concrete batching”. The method statement must provide information on proposed storage, washing & disposal of cement, packaging, tools and plant.</p> <p>(b) The mixing of concrete must only be done at specifically selected sites on mortar boards or similar structures to contain run-off into soils, streams and natural vegetation.</p> <p>(c) No mixing of cement/concrete should take place within 30m of aquatic features.</p> <p>(d) Cleaning of cement mixing and handling</p>	Contractor	On-going/ daily	

	<p>equipment must be done using proper cleaning trays and at designated areas only.</p> <p>(e) Water used to clean concrete off of machinery should be treated as grey water and disposed of at a licensed water treatment works.</p>			
<p>This section aims to provide measures to minimise pollution of soil, surface and groundwater resources.</p>	<p>B.7.2 Storage and disposal requirements</p> <p>(a) All empty cement bags must be stored in a dedicated area and later removed from the site for appropriate disposal at a licensed facility. The burning of cement bags is strictly forbidden.</p> <p>(b) Any spillage that may occur must be investigated and immediate remedial action must be taken.</p> <p>(c) The visible remains of concrete, either solid, or from washings, must be physically removed immediately and disposed of as waste to a registered landfill site.</p> <p>(d) Cement batching areas must be located in consultation with the ECO to ensure residues are contained and that the proposed location does not fall within sensitive areas such as drainage lines, storm water channels, etc.</p>	Contractor	On-going/ daily	
B.8 Dangerous and toxic materials		Responsibility	Frequency	Notes
<p>This section aims to provide</p>	<p>B.8.1 Provision of storage facilities</p>	Contractor	On-going/ daily	

<p>measures to prevent pollution of soil, surface and ground water resources in the immediate and surrounding environments. It also proposes measures to minimise the chances of transgression of the acts controlling pollution.</p>	<ul style="list-style-type: none"> (a) Materials such as fuel, oil, paint, herbicide and insecticides must be sealed and stored in bermed areas or under lock and key, as appropriate, in well-ventilated areas. (b) Sufficient care must be taken when handling these materials to prevent pollution. Training on the handling of dangerous and toxic materials must be conducted for all staff prior to the commencement of construction. (c) In the case of pollution of any surface or groundwater, the Regional Representative of the Department of Water and Sanitation (DWS) must be informed immediately. (d) Storage areas must display the required safety signs depicting “no smoking”, No Naked lights” and “Danger” containers must be clearly marked to indicate contents as well as safety requirements. (e) The contractor must supply a method statement for the storage of hazardous materials at tender stage. (f) Material Safety Data Sheets (MSDS) must be prepared for all hazardous substances on site and supplied by the supplier where relevant. MSDS’s must be updated as required. 			
<p>B.9. Bulk storage of fuels and oils (as applicable)</p>		<p>Responsibility</p>	<p>Frequency</p>	<p>Notes</p>
<p>This section aims to provide measures to prevent pollution of soil, surface and ground water resources in the immediate and surrounding</p>	<p>B.9.1 Bulk storage of fuels and oils</p> <ul style="list-style-type: none"> (a) The contractor must provide and maintain a method statement for “Diesel tanks and refuelling procedures”. (b) Bulk fuel storage tanks on the site must be on 	<p>Contractor</p>	<p>Once of as required</p>	

<p>environments. It also proposes measures to minimise the chances of transgression of the acts controlling pollution.</p>	<p>an impervious surface that is bunded and able to contain at least 110% of the volume of the tanks. The filler tap must be inside the bunded area where possible and the bund wall must not have a tap or valve.</p> <ul style="list-style-type: none"> (c) The bunded area should have a water/ fuel sump separator. (d) A Flammable Liquid License must be obtained for diesel volumes greater than 200 litres. (e) Bulk fuel storage tanks must be located in a portion of the construction camp where they do not pose a high risk in terms of water pollution (i.e. they must be located away from water courses and drainage lines) (f) Bulk fuel storage tanks must be placed so that they are out of the way of traffic, so that the risk of the tanks being ruptured or damaged by vehicles is minimised. (g) Bulk fuel storage areas should be covered during the rainy season. (h) No fuel storage, refuelling, vehicle maintenance or vehicle depots should be allowed within 30 m of the edge of any wetlands or drainage lines. (i) Refuelling and fuel storage areas, and areas used for the servicing or parking of vehicles and machinery, should be located on impervious bases and should have bunds around them. Bunds should be sufficiently high to ensure that all the fuel kept in the area will be captured in the event of a major spillage. 			
<p>B.10. Use of dangerous and toxic materials</p>		<p>Responsibility</p>	<p>Frequency</p>	<p>Notes</p>

<p>This section aims to provide measures to prevent pollution of soil, surface and ground water resources in the immediate and surrounding environments. It also proposes measures to minimise the chances of transgression of the acts controlling pollution.</p>	<p>B.10.1 Use of dangerous and toxic materials</p> <p>(a) The contractor must keep the necessary materials and equipment on site to deal with spills/ fire of the materials present should they occur.</p> <p>(b) The contractor must set up a procedure (which will be stipulated in a method statement) for dealing with spills/ fire, which will include notifying the ECO and the relevant authorities prior to commencing with construction. These procedures must be developed with consultation and approval by the appointed EO.</p> <p>(c) A record must be kept of all spills and the corrective action taken.</p>	<p>Contractor</p>	<p>As required</p>	
<p>B.11. Stockpile handling</p>		<p>Responsibility</p>	<p>Frequency</p>	<p>Notes</p>
<p>Stockpiles need to be managed in accordance with the outlined specifications in order to minimise the scarring of the soil surface and land features, disturbance and loss of soil, construction footprint, sedimentation of nearby drainage lines; maintain the integrity of the topsoil for landscaping, containment of invasive plant growth as well</p>	<p>B.11.1 Stockpiles</p> <p>(a) All stockpiled material must be easily accessible without any environmental damage.</p> <p>(b) All temporarily stockpiled material must be stockpiled in such a way that the spread of materials are minimised.</p> <p>(c) The stockpiles may only be placed within the demarcated areas the location of which must be approved by the ECO.</p> <p>(d) The contractor must avoid all clearly marked vegetated areas that will not be cleared.</p> <p>(e) Storm water run-off from the stockpile sites</p>	<p>Contractor</p>	<p>On-going/ daily</p>	

<p>as the contamination of storm water run-off.</p>	<p>and other related areas must be directed into the storm water system with the necessary pollution prevention measures such as silt traps and may not run freely into the immediate and surrounding environments.</p> <ul style="list-style-type: none"> (f) Stockpiles are to be stabilised if signs of erosion are visible. (g) During construction, all materials and stockpiles will be covered with tarps to prevent erosion, as well as dust arising from it, and to mitigate the visibility thereof (where required and as directed by the ECO). (h) Soils from different horizons must be stock piled such that topsoil stockpiles do not get contaminated by sub-soil material. (i) Topsoil stockpiles must be monitored for invasive exotic vegetation growth. Contractors must remediate as and when required in consultation with the ECO. (j) No plant, workforce or any construction related activities may be allowed onto the topsoil stockpiles. (k) Topsoil stockpiles must be clearly demarcated as no-go areas. (l) Stock piles must not be higher than 2m to avoid compaction thereby maintaining the soil integrity and chemical composition. (m) No spoil material, including stripped topsoil, should be temporarily stockpiled within 30 m of the edge of any wetland or drainage line. 			
B.12 Fire Management		Responsibility	Frequency	Notes

<p>This section aims to provide measures to minimise the destruction of natural fauna and flora as well as maintain the general safety on site.</p>	<p>B.12.1 Fire management</p> <ul style="list-style-type: none"> (a) The contractors must provide and maintain a method statement for “fires”, clearly indicating where and for what fires will be utilised plus details on the fuel to be utilised (b) Absolutely no burning of waste is permitted. (c) No open fires permitted on site at any time. (d) No wood is to be collected, chopped or felled for fires from private or public property as well as from no-go or sensitive areas within the site and any surrounding natural vegetation. (e) Employ a fire officer for on-site control. (f) Fire-fighting equipment to be kept on site and serviced regularly. 	<p>Contractor</p>	<p>On-going/ daily</p>	
<p>B.13. Erosion and sedimentation</p>		<p>Responsibility</p>	<p>Frequency</p>	<p>Notes</p>
<p>This section aims to provide measures to minimise the damage caused by erosion, impedance of the natural flow of water, scarring of the soil surface and land features, disturbance and loss of topsoil as well as enable the re-growth of disturbed areas.</p>	<p>B.13.1 Erosion and sedimentation management</p> <ul style="list-style-type: none"> (a) To reduce the loss of material by erosion, the contractor must ensure that disturbance on site is kept to a minimum. The contractor is responsible for rehabilitating all eroded areas in such a way that the erosion potential is minimised after construction has been completed. (b) Should there be any disturbed areas during the construction phase, they must be rehabilitated after the completion of the construction phase. (c) These areas must be cordoned off so that vehicles or construction personnel cannot 	<p>Contractor</p>	<p>On-going/ daily</p>	

	<p>gain access to these areas.</p> <p>(d) Limit the footprint area of the construction activities to what is absolutely essential in order to minimise environmental damage, especially where towers will encroach upon the wetland boundary. Construction vehicles must use existing roads where possible.</p>			
B.14. Fauna and flora		Responsibility	Frequency	Notes
<p>This section aims to provide measures to minimise the disturbance to animals, interruption of breeding patterns of birds as well as the destruction of habitats.</p>	<p>B.14.1 Fauna management</p> <p>(a) All activities on site must comply with the regulations of the Animals Protection Act, 1962 (Act No. 71 of 1962), as amended.</p> <p>(b) All construction workers must be informed that the intentional killing of any animal is not permitted as faunal species are a benefit to society. Poaching is illegal and it must be a condition of employment that any employee caught poaching will be dismissed. Employees must be trained on how to deal with fauna species as intentional killing will not be tolerated. In the case of a problem animal e.g. a large snake, a specialist must be called in to safely relocate the animal if the EO or ECO is not able to.</p> <p>(c) Environmental induction training and awareness must include aspects dealing in safety with wild animals into and on site. Focus on animals such as snakes and other reptiles that often generate fear by telling workers how to move safely away and to whom to report the sighting. Workers should also be informed where snakes most often</p>	<p>Contractor</p>	<p>On-going/ daily</p>	

	<p>hide so that they can be vigilant when lifting stones, etc.</p> <p>(d) Disturbances to nesting sites of birds must be avoided, as far as possible.</p> <p>(e) Vegetation clearance should be conducted systematically from the start to the end of the route to allow fauna to move away.</p> <p>(f) Construction activities and vehicle traffic should be restricted to daylight hours when the majority of faunal species are inactive.</p> <p>(g) Species such as tortoises and porcupines should be removed to surrounding areas if encountered on site and not collected as this is illegal.</p> <p>(h) Should wild animals be encountered during the construction phase, these animals should not be hunted or harmed, but allowed to escape into surrounding land.</p> <p>(i) Sensitive habitats that include riparian areas, floodplains, rocky habitat, ridges, wetlands and other sensitive sites should be avoided as far as is possible. This will require proactive planning and route alignments to minimize the area that will be directly affected by pylons and construction activities.</p> <p>(j) Where-ever possible, the timing and duration of construction activities must be scheduled to prevent direct impacts on key breeding times and seasons. This would apply specifically to sensitive mammal species, carnivore species and larger bird species.</p>			
<p>This section aims to provide measures to minimise the</p>	<p>B.14.2 Flora management</p> <p>(a) Trees and natural vegetation or any other</p>	<p>Contractor</p>	<p>As and when required</p>	

<p>disturbance to vegetation, prevent litigation concerning removal of vegetation, encourage natural habitat fauna, minimise scarring of the soil surface and land features, minimise disturbance and loss of topsoil as well as the risk of fauna and flora destruction.</p>	<p>natural features inside and outside the work area, which will not be cleared for construction purposes as indicated by the ECO, must be clearly demarcated and not be defaced, removed, painted for benchmarks or otherwise damaged, even for survey purposes. The latter can only be done if stipulated in the Environmental Authorisation and must be overseen by the EO and ECO. Any feature defaced by the contractor must be reinstated to the satisfaction of the ECO and penalties/fines may be imposed by the ER.</p> <p>(b) The contractor must rehabilitate any disturbed areas once construction activities have terminated for e.g. by removing all contaminated soils. The crew camp during construction must be located in an area that will be developed to impervious surfaces after construction, so as to ensure that natural vegetation cover is not disturbed. A method statement must be provided and maintained by the contractor.</p> <p>(c) Once construction is complete, rehabilitation of un-built areas must be undertaken in order to restore the aesthetic & ecological value of the area. It is recommended that the ECO be consulted with regard to the most appropriate rehabilitation vegetation and structures. Active re-vegetation must take place with locally indigenous vegetation under the supervision of the ECO.</p> <p>(d) No open fires shall be allowed on site under any circumstances, fires will only be permitted in adequate facility within the crew camp, Forest Act, 1984 (Act No. 122 of 1984).</p>			
---	--	--	--	--

	<ul style="list-style-type: none"> (e) Avoid strip clearing. (f) Vegetation should be removed only where construction is to take place. (g) Clearing of the servitude should be as narrow as possible to prevent major destruction of habitats. (h) Prior to construction, the route should be walked by a qualified botanist, to locate and remove sensitive species. (i) Should any sensitive species be found, management measures should be adopted for the species and fenced if applicable. (j) Sensitive plant species should be removed and relocated from points of direct impact before construction starts. (k) Sensitive habitats that include riparian areas, floodplains, rocky habitat, ridges, wetlands and other sensitive sites should be avoided as far as is possible. This will require proactive planning and route alignments to minimize the area that will be directly affected by pylons and construction activities. (l) A strategy must be developed prior to construction to prevent the spread and dispersal of alien plants. Where possible, strategies to prevent the regrowth and coppicing of felled exotic or alien trees must be formulated and enforced throughout the life time of the powerline; 			
<p>This section aims to provide measures to minimise the disturbance to sensitive</p>	<p>B.14.3 Avifauna management</p> <ul style="list-style-type: none"> (a) An appropriate pylon must be designed to 	<p>Contractor</p>	<p>As and when required</p>	

<p>avifauna species.</p>	<p>ensure that large birds (vultures and secretary bird as well as larger eagles) are not likely to be electrocuted by the infrastructure. This will require adequate perches for birds to rest on, the prevention of areas on the pylon for birds to roost and nest in, adequate distances between powerlines to prevent the earthing of the line.</p> <p>(b) Ensure that all new lines are marked with bird flight diverters along their entire length, using industry standard markers and marker fitting protocols.</p> <p>(c) In situations where new lines traverse in parallel with existing, unmarked power lines, this approach has the added benefit of reducing the collision risk posed by the older line.</p> <p>(d) Ensure that all new power infrastructure is adequately insulated and bird-friendly in configuration.</p> <p>(e) Minimise disturbance impacts associated with the construction of the line by abbreviating construction time, scheduling construction activities around avian breeding schedules where necessary, lowering levels of associated noise, and reducing the size of the inclusive development footprint.</p> <p>(f) Minimise the extent of woodland cleared in the servitude required to track the route of all new lines – ideally by routing these lines within existing development corridors.</p> <p>(g) Establishing a practical and sustainable management plan for dealing with raptor stick-nests built on the new line. Ultimately, these may include nest sites of red-listed or otherwise scarce species such as African Fish-Eagle, African Hawk Eagle, Martial</p>			
--------------------------	--	--	--	--

	Eagle and Lanner Falcon.			
B.15. Wetland and Riparian Features		Responsibility	Frequency	Notes
<p>This section aims to provide measures to minimise the damage caused by construction activities on the various riverine and wetland features found throughout the study area.</p>	<p>B.15.1 Footprint Management</p> <ul style="list-style-type: none"> (a) Limit the footprint area of the construction activities to what is absolutely essential in order to minimise environmental damage, especially where towers will encroach upon the wetland boundary. Construction vehicles must use existing roads where possible. (b) During construction all building materials should be kept out of the wetland areas as well as any active stream channels; (c) In any areas where disturbance of banks or wetland vegetation occurs, bank and bed profile should be re-instated in such a way as reinstate predevelopment habitat conditions (d) Keep all demarcated sensitive zones outside of the construction area off limits during the construction and rehabilitation phases of the development. (e) Appropriate sanitary facilities must be provided during the construction phase and all waste removed to an appropriate waste facility. <p>B.15.2 Vehicle Access</p> <ul style="list-style-type: none"> (a) All construction footprint areas should remain as small as possible and should not encroach onto surrounding more sensitive areas. It 	Contractor	On-going/ daily	

	<p>must be ensured that these areas are off-limits to construction vehicles and personnel as far as possible.</p> <p>(b) In the event of a breakdown, maintenance of vehicles must take place with care and the recollection of spillage should be practiced near the surface area to prevent ingress of hydrocarbons into topsoil.</p> <p>(c) It must be ensured that all hazardous storage containers and storage areas comply with the relevant SABS standards to prevent leakage. All vehicles must be regularly inspected for leaks. Re-fuelling must take place on a sealed surface area to prevent ingress of hydrocarbons into topsoil.</p> <p>(d) All spills should be immediately cleaned up and treated accordingly.</p> <p>B.15.2 Soil Conditions</p> <p>(a) All soils compacted as a result of construction activities falling outside of project footprint areas should be ripped and profiled. Special attention should be paid to alien and invasive control within these areas. Alien and invasive vegetation control should take place throughout all construction and rehabilitation phases to prevent loss of floral habitat.</p> <p>(b) Monitor all systems for erosion and incision.</p>			
B.16. Heritage Features		Responsibility	Frequency	Notes
This section aims to provide	B.16.1 Ruins of a farmstead	Contractor	As and when	

<p>measures to minimise the damage caused by construction activities on the various heritage resources found throughout the study area.</p>	<p>(a) This feature should be avoided by rerouting the power line more to the south to bypass the farmstead. It should be fenced off with danger tape during construction of the power line. If the area cannot be avoided, the house, outbuildings and surrounding yard should be documented (mapped and photographed) in full.</p> <p>B.16.2 Large informal burial place</p> <p>(a) If at all possible, the burial site should be avoided and fenced off with danger tape during construction of the power line.</p> <p>(b) A valid permit for the relocation of the graves must be obtained from SAHRA, SAPS, Dept. of Health, etc.</p> <p>B.16.3 Two small farm cemeteries</p> <p>(a) If at all possible, the burial site should be avoided and fenced off with danger tape during construction of the power line.</p> <p>(b) A valid permit for the relocation of the graves must be obtained from SAHRA, SAPS, Dept. of Health, etc.</p> <p>B.16.4 Small burial place – Maritz family</p> <p>(a) The cemetery should be avoided and fenced off with danger tape during construction of the power line.</p> <p>(b) A valid permit for the relocation of the graves must be obtained from SAHRA, SAPS, Dept.</p>		<p>required</p>	
---	--	--	-----------------	--

	of Health, etc.			
--	-----------------	--	--	--

3.3 Section C: Operation Phase Activities

C.1. Powerlines		Responsibility	Frequency	Notes
	<p>C.1.1 Powerlines</p> <p>(a) Inspect powerlines regularly for signs of vandalism or theft of support structures or conductors.</p> <p>(b) Install anti-climb wires to deter individuals from climbing towers.</p> <p>(c) Monitor the growth of vegetation in the servitude and keep the clearance between vegetation and lines to those legally required.</p> <p>(d) Monitor bird nests on powerlines, which if present must be managed according to Eskom's Bird Nesting Guidelines.</p> <p>(e) All collisions and electrocutions should be recorded and passed to relevant authorities including Eskom management;</p> <p>(f) If collision and electrocution increases, management measures should be considered to mitigate such impacts;</p>	Proponent	In accordance with Eskom specifications and guidelines	
C.2. Access Tracks		Responsibility	Frequency	Notes
	<p>C.2.1 Access Tracks</p>	Proponent	In accordance with Eskom specifications	

	<ul style="list-style-type: none"> (a) The maintenance of access tracks is the responsibility of Eskom. (b) Access tracks must be repaired when necessary to avoid the formation of ruts. (c) Eskom's Erosion Guidelines should be used manage erosion of access and servitudes. (d) All weeds and invasive vegetation in the electrical servitude should be monitored and eradicated on a continuous basis for the period the servitude will be in use. 		and guidelines	
--	--	--	----------------	--

This section must be updated as operational needs dictate.

3.4 Section D: Decommissioning Phase Activities

Please note that that it is not envisaged that the Pelly-Fairfield 132kV powerline will be decommissioned. However should this come into effect at a later point in time, this EMPr will have to be updated to include specific measures and methodologies for the decommissioning activities. Below are the major activities anticipated to occur during decommissioning.

D.1. Waste Management		Responsibility	Frequency	Notes
	<p>D.1.1 Waste Management</p> <p>(a) Waste generation must be managed according to international best practice.</p> <p>(b) All materials that can be recycled must be recycled where possible.</p>	Proponent	In accordance with Eskom specifications and guidelines	
D.2. Emergency Response for spillages		Responsibility	Frequency	Notes
	<p>D.2.1 Soil Contamination</p> <p>(a) Contaminated soil must be removed and disposed of at an appropriate registered landfill site.</p>	Proponent	In accordance with Eskom specifications and guidelines	

D.3. Decommissioning Activities and associated Heavy Machinery and Equipment		Responsibility	Frequency	Notes
	<p>D.3.1 Alteration of Hydrology of Drainage lines and Wetlands</p> <ul style="list-style-type: none"> (a) All decommissioning vehicles should be kept in good working condition; (b) All decommissioning vehicles should be parked in demarcated areas when not in use, and the soil in this area should be rehabilitated (if required); (c) No vehicles, machinery, personnel, construction material, cement, fuel, oil or waste should be allowed outside of the demarcated working areas; (d) No fuel storage, refuelling, vehicle maintenance or vehicle depots should be allowed within 30 m of the edge of any wetlands or drainage lines; (e) Vehicles and machinery should not be washed within 30 m of the edge of any wetland or drainage line; and (f) No effluents or polluted water should be allowed to discharge into any drainage lines or wetland areas. 	Proponent	In accordance with Eskom specifications and guidelines	

ANNEXURE 1

DECLARATION OF UNDERSTANDING BY THE DEVELOPER

I, _____

Representing _____

Declare that I have read and understood the contents of the Environmental Management Plan for:

Contract _____

I also declare that I understand my responsibilities in terms of enforcing and implementing the Environmental Specifications for the aforementioned Contract.

Signed: _____

Place: _____

Date: _____

Witness 1: _____

Witness2: _____

ANNEXURE 2

DECLARATION OF UNDERSTANDING BY THE ENGINEER

I, _____

Representing _____

Declare that I have read and understood the contents of the Environmental Management Plan for:

Contract _____

I also declare that I understand my responsibilities in terms of enforcing and implementing the Environmental Specifications for the aforementioned Contract.

Signed: _____

Place: _____

Date: _____

Witness 1: _____

Witness2: _____

ANNEXURE 3

DECLARATION OF UNDERSTANDING BY THE CONTRACTOR

I, _____

Representing _____

Declare that I have read and understood the contents of the Environmental Management Plan for:

Contract _____

I also declare that I understand my responsibilities in terms of enforcing and implementing the Environmental Specifications for the aforementioned Contract.

Signed: _____

Place: _____

Date: _____

Witness 1: _____

Witness2: _____

METHOD STATEMENT: Solid Waste Management

CONTRACT:..... DATE:.....

WHAT WORK IS TO BE UNDERTAKEN? [Give a brief description of the works to be undertaken on site that will generate waste (hazardous and non-hazardous wastes)]: * Note: please attach extra pages if more space is required.

*Insert additional pages as required

WHERE ARE THE WORKS TO BE UNDERTAKEN? (Where possible, provide an annotated plan and a full description of the extent of the works): * Note: please attach extra pages if more space is required

*Insert additional pages as required

METHOD STATEMENT: Solid Waste Management (contd.)

START AND END DATE OF THE WORKS FOR WHICH THE METHOD STATEMENT IS REQUIRED:

Start Date:.....

End Date:.....

HOW IS WASTE TO BE MANAGED ON SITE? (Provide as much detail as possible, including annotated sketches and plans where possible): * Note: please attach extra pages if more space is required

***Insert additional pages as required**

**DECLARATIONS for Method Statement: Solid Waste Management
(contd.)**

1) ENGINEER

The work described in this Method Statement, if carried out according to the methodology described, is satisfactory to prevent or control environmental harm and is thus approved:

(Signed) (Print name)

Dated: _____

2) ECO

The work described in this Method Statement, if carried out according to the methodology described, is satisfactory to prevent or control environmental harm and is thus approved:

(Signed) (Print name)

Dated: _____

2) CONTRACTOR

I understand the contents of this Method Statement and the scope of the works required of me. I further understand that this Method Statement may be amended on application to and with approval by the Engineer, and that the SHE Coordinator, Construction Manager and ECO will audit my compliance with the contents of this Method Statement

(Signed) (Print name)

Dated: _____

ANNEXURE 4 B

METHOD STATEMENT: Crew Camps and Construction Lay Down Areas

CONTRACT:..... **DATE:**.....

WHAT CREW CAMPS AND CONSTRUCTION LAY DOWN AREAS ARE REQUIRED ON SITE DURING CONSTRUCTION? (Give a brief description of these): * Note: please attach extra pages if more space is required

*Insert additional pages as required

WHERE ARE THE CREW CAMPS AND CONSTRUCTION LAY DOWN AREAS TO BE LOCATED? (Where possible, provide an annotated plan and a full description of the extent of the works): * Note: please attach extra pages if more space is required

*Insert additional pages as required

METHOD STATEMENT:

Crew Camps and Construction Lay Down Areas (contd.)

START AND END DATE OF THE WORKS FOR WHICH THE METHOD STATEMENT IS REQUIRED:

Start Date:.....

End Date:.....

HOW ARE CREW CAMPS AND CONSTRUCTION LAY DOWN AREAS TO BE MANAGED?

(Provide as much detail as possible, including annotated sketches and plans where possible): *

Note: please attach extra pages if more space is required

*Insert additional pages as required

DECLARATIONS for Method Statement

Crew Camps and Construction Lay Down Areas (contd.)

1) ENGINEER

The work described in this Method Statement, if carried out according to the methodology described, is satisfactory to prevent or control environmental harm and is thus approved:

(Signed) (Print name)

Dated:_____

2) ECO

The work described in this Method Statement, if carried out according to the methodology described, is satisfactory to prevent or control environmental harm and is thus approved:

(Signed) (Print name)

Dated:.._____

2) CONTRACTOR

I understand the contents of this Method Statement and the scope of the works required of me. I further understand that this Method Statement may be amended on application to and with approval by the Engineer, and that the SHE Coordinator, Construction Manager and ECO will audit my compliance with the contents of this Method Statement

(Signed) (Print name)

Dated: _____

METHOD STATEMENT: Cement and Concrete Batching

CONTRACT:..... DATE:.....

WHAT WORK IS TO BE UNDERTAKEN? (Give a brief description of the works): * Note: please attach extra pages if more space is required

*Insert additional pages as required

WHERE ARE THE WORKS TO BE UNDERTAKEN? (Where possible, provide an annotated plan and a full description of the extent of the works): * Note: please attach extra pages if more space is required

*Insert additional pages as required

**METHOD STATEMENT:
Cement and Concrete Batching (contd.)**

**START AND END DATE OF THE WORKS FOR WHICH THE METHOD STATEMENT IS
REQUIRED:**

Start Date:.....

End Date:.....

HOW ARE THE WORKS TO BE UNDERTAKEN? (Provide as much detail as possible, including annotated sketches and plans where possible): * Note: please attach extra pages if more space is required

***Insert additional pages as required**

DECLARATIONS for Method Statement

Cement and Concrete Batching (contd.)

1) ENGINEER

The work described in this Method Statement, if carried out according to the methodology described, is satisfactory to prevent or control environmental harm and is thus approved:

(Signed)

(Print name)

Dated:_____

2) ECO

The work described in this Method Statement, if carried out according to the methodology described, is satisfactory to prevent or control environmental harm and is thus approved:

(Signed)

(Print name)

Dated:_____

2) CONTRACTOR

I understand the contents of this Method Statement and the scope of the works required of me. I further understand that this Method Statement may be amended on application to and with approval by the Engineer, and that the SHE Coordinator, Construction Manager and ECO will audit my compliance with the contents of this Method Statement

(Signed)

(Print name)

Dated:_____

METHOD STATEMENT: Dust Control

CONTRACT:..... DATE:.....

WHAT WORK IS TO BE UNDERTAKEN ON SITE THAT COULD GENERATE DUST? (Give a brief description of the works): * Note: please attach extra pages if more space is required

*Insert additional pages as required

WHERE ARE THE WORKS TO BE UNDERTAKEN (where possible, provide an annotated plan and a full description of the extent of the works): * Note: please attach extra pages if more space is required

*Insert additional pages as required

METHOD STATEMENT: Dust Control (contd.)

START AND END DATE OF THE WORKS FOR WHICH THE METHOD STATEMENT IS REQUIRED:

Start Date:.....

End Date:.....

HOW ARE THE WORKS TO BE UNDERTAKEN SO AS TO MINIMISE AND CONTROL DUST GENERATION ON SITE? (Provide as much detail as possible, including annotated sketches and plans where possible): * Note: please attach extra pages if more space is required

***Insert additional pages as required**

DECLARATIONS for Method Statement: Dust Control (contd.)

1) ENGINEER

The work described in this Method Statement, if carried out according to the methodology described, is satisfactory to prevent or control environmental harm and is thus approved:

(Signed)

(Print name)

Dated:_____

2) ECO

The work described in this Method Statement, if carried out according to the methodology described, is satisfactory to prevent or control environmental harm and is thus approved:

(Signed)

(Print name)

Dated:_____

2) CONTRACTOR

I understand the contents of this Method Statement and the scope of the works required of me. I further understand that this Method Statement may be amended on application to and with approval by the Engineer, and that the SHE Coordinator, Construction Manager and ECO will audit my compliance with the contents of this Method Statement

(Signed)

(Print name)

Dated:_____

**METHOD STATEMENT:
Hydrocarbon and Emergency Spill Procedure**

CONTRACT:..... DATE:.....

WHAT HAZARDOUS SUBSTANCES (INCL. FUELS) ARE TO BE STORED ON SITE? (Give a brief description of the works): * Note: please attach extra pages if more space is required

***Insert additional pages as required**

WHERE ARE THESE SUBSTANCES TO BE STORED ON SITE? (Where possible, provide an annotated plan and a full description of the extent of the works): * Note: please attach extra pages if more space is required

***Insert additional pages as required**

METHOD STATEMENT:

Hydrocarbon and Emergency Spill Procedures (contd.)

START AND END DATE OF THE WORKS FOR WHICH THE METHOD STATEMENT IS REQUIRED:

Start Date:.....

End Date:.....

HOW ARE HAZARDOUS SUBSTANCES TO BE MANAGED TO AVOID SPILLAGES AND WHAT EMERGENCY PROCEDURES ARE TO BE IMPLEMENTED IN CASE OF A SPILLAGE?

(Provide as much detail as possible, including annotated sketches and plans where possible): *

Note: please attach extra pages if more space is required

***Insert additional pages as required**

DECLARATIONS for Method Statement

Hydrocarbon and Emergency Spill Procedures (contd.)

1) ENGINEER

The work described in this Method Statement, if carried out according to the methodology described, is satisfactory to prevent or control environmental harm and is thus approved:

(Signed)

(Print name)

Dated:_____

2) ECO

The work described in this Method Statement, if carried out according to the methodology described, is satisfactory to prevent or control environmental harm and is thus approved:

(Signed)

(Print name)

Dated:_____

2) CONTRACTOR

I understand the contents of this Method Statement and the scope of the works required of me. I further understand that this Method Statement may be amended on application to and with approval by the Engineer, and that the SHE Coordinator, Construction Manager and ECO will audit my compliance with the contents of this Method Statement

(Signed)

(Print name)

Dated:_____

**METHOD STATEMENT:
Fire Management**

CONTRACT:..... **DATE:**.....

WHAT WORK IS TO BE UNDERTAKEN? (Give a brief description of the works): * Note: please attach extra pages if more space is required

***Insert additional pages as required**

WHERE ARE THE WORKS TO BE UNDERTAKEN? (Where possible, provide an annotated plan and a full description of the extent of the works): * Note: please attach extra pages if more space is required

***Insert additional pages as required**

**METHOD STATEMENT:
Fire Management (contd.)**

**START AND END DATE OF THE WORKS FOR WHICH THE METHOD STATEMENT IS
REQUIRED:**

Start Date:.....

End Date:.....

HOW ARE THE WORKS TO BE UNDERTAKEN? (Provide as much detail as possible, including annotated sketches and plans where possible): * Note: please attach extra pages if more space is required

***Insert additional pages as required**

DECLARATIONS for Method Statement

Fire Management (contd.)

1) ENGINEER

The work described in this Method Statement, if carried out according to the methodology described, is satisfactory to prevent or control environmental harm and is thus approved:

(Signed)

(Print name)

Dated:_____

2) ECO

The work described in this Method Statement, if carried out according to the methodology described, is satisfactory to prevent or control environmental harm and is thus approved:

(Signed)

(Print name)

Dated:_____

2) CONTRACTOR

I understand the contents of this Method Statement and the scope of the works required of me. I further understand that this Method Statement may be amended on application to and with approval by the Engineer, and that the SHE Coordinator, Construction Manager and ECO will audit my compliance with the contents of this Method Statement

(Signed)

(Print name)

Dated:_____

**METHOD STATEMENT:
Diesel tanks and refueling procedures**

CONTRACT:..... **DATE:**.....

WHAT WORK IS TO BE UNDERTAKEN? (Give a brief description of the works): * Note: please attach extra pages if more space is required

*Insert additional pages as required

WHERE ARE THE WORKS TO BE UNDERTAKEN? (Where possible, provide an annotated plan and a full description of the extent of the works): * Note: please attach extra pages if more space is required

*Insert additional pages as required

METHOD STATEMENT:

Diesel tanks and refuelling procedures (contd.)

START AND END DATE OF THE WORKS FOR WHICH THE METHOD STATEMENT IS REQUIRED:

Start Date:.....

End Date:.....

HOW ARE THE WORKS TO BE UNDERTAKEN? (Provide as much detail as possible, including annotated sketches and plans where possible): * Note: please attach extra pages if more space is required

***Insert additional pages as required**

DECLARATIONS for Method Statement

Diesel tanks and refuelling procedures (contd.)

1) ENGINEER

The work described in this Method Statement, if carried out according to the methodology described, is satisfactory to prevent or control environmental harm and is thus approved:

(Signed) (Print name)

Dated:_____

2) ECO

The work described in this Method Statement, if carried out according to the methodology described, is satisfactory to prevent or control environmental harm and is thus approved:

(Signed) (Print name)

Dated:_____

2) CONTRACTOR

I understand the contents of this Method Statement and the scope of the works required of me. I further understand that this Method Statement may be amended on application to and with approval by the Engineer, and that the SHE Coordinator, Construction Manager and ECO will audit my compliance with the contents of this Method Statement

(Signed) (Print name)

Dated: _____

METHOD STATEMENT: Noise Control

CONTRACT:..... DATE:.....

WHAT WORK IS TO BE UNDERTAKEN ON SITE THAT COULD GENERATE DUST? (Give a brief description of the works): * Note: please attach extra pages if more space is required

*Insert additional pages as required

WHERE ARE THE WORKS TO BE UNDERTAKEN (where possible, provide an annotated plan and a full description of the extent of the works): * Note: please attach extra pages if more space is required

*Insert additional pages as required

METHOD STATEMENT: Noise Control (contd.)

START AND END DATE OF THE WORKS FOR WHICH THE METHOD STATEMENT IS REQUIRED:

Start Date:.....

End Date:.....

HOW ARE THE WORKS TO BE UNDERTAKEN SO AS TO MINIMISE AND CONTROL DUST GENERATION ON SITE? (Provide as much detail as possible, including annotated sketches and plans where possible): * Note: please attach extra pages if more space is required

***Insert additional pages as required**

DECLARATIONS for Method Statement: Noise Control (contd.)

1) ENGINEER

The work described in this Method Statement, if carried out according to the methodology described, is satisfactory to prevent or control environmental harm and is thus approved:

(Signed) (Print name)

Dated:_____

2) ECO

The work described in this Method Statement, if carried out according to the methodology described, is satisfactory to prevent or control environmental harm and is thus approved:

(Signed) (Print name)

Dated:_____

2) CONTRACTOR

I understand the contents of this Method Statement and the scope of the works required of me. I further understand that this Method Statement may be amended on application to and with approval by the Engineer, and that the SHE Coordinator, Construction Manager and ECO will audit my compliance with the contents of this Method Statement

(Signed) (Print name)

Dated:_____

TYPICAL INCIDENTS INCURRING PENALTIES	VALUE
Failure to secure construction site from public access	R5,000
Failure to demarcate working areas and servitudes and/or maintain fences and/or demarcation tape.	R1,000
Failure to stockpile topsoil correctly (per incident)	R2,000
Failure to stockpile materials in designated areas (per incident)	R500
Discharging effluent and/or polluted stormwater onto the ground or into surface water (per incident)	R2,000
Failure to provide adequate sanitation, waste disposal facilities or services (per incident)	R1,000
Failure to demarcate construction area boundaries before commencing construction clearance and other activities (per incident)	R5,000
Venturing into or undertaking construction related activities within no-go areas, without formal written approval from the ECO (per incident)	R5,000
No induction regarding environmental matters and site housekeeping practices (per employee)	R2,000
Stockpile of soils and materials outside demarcated areas (per incident)	R1,000
Inappropriate mixing of cement/concrete and poor management of concrete slurry (per incident)	R2,000
Burning of waste on site (including cement bags) (per incident)	R 2,000
Untidiness and litter at camp (per incident)	R200
Unauthorised removal of indigenous trees, medicinal or other plants (per incident)	R2,000
Damaging/killing animals/birds (per incident)	R 1,500
Failure to erect temporary fences as required (per incident)	R2,000
Failure to reinstate disturbed areas within the specified timeframe (per incident)	R2,000
Fire – costs of runaway fires will be borne by the Contractor, should he/she be proven responsible for such fires (per incident)	R25,000
Failure to provide adequate equipment for emergency situations (per incident)	R5,000
Defacing, painting or damaging natural or heritage features (per incident) – mandatory removal of employee from site	R5,000
Damaging cultural, historical and/or archaeological sites of importance (per incident) – mandatory removal of employee from site	R5,000
Failure to maintain basic safety measures on site	R1,000
Failure to carry out required community liaison, damage to property etc, without prior negotiation and/or compensation and other social infringements (per incident)	R1,000
Persistent and un-repaired oil leaks from machinery. The use of inappropriate methods of refuelling (per incident)	R2,000

TYPICAL INCIDENTS INCURRING PENALTIES	VALUE
Failure to provide drip trays and/or empty them frequently (per incident)	R500
Inappropriate use of bins and poor waste management on site (per incident)	R500
Inappropriate off-site disposal of waste from site (per incident)	R10,000
Deliberate lighting of illegal fires on site (per incident)	R1,000
The eating of meals on site outside the defined eating area. Individual not making use of the site ablution facilities (per incident)	R200
Inappropriate use of adjacent watercourses and water bodies – such as for unapproved water abstraction, washing of vehicles, wastewater disposal and use by employees for washing (per incident)	R1000
Any person, vehicle, item of plant, or anything related to the Contractor's operations causing a public nuisance (per incident)	R500
Construction vehicles not adhering to speed limits (per incident)	R200
Failure to maintain and register incidents in the incident register (per incident)	R1,000
Failure to remove all temporary features and leftovers from the construction site and works areas upon completion of the works (per incident)	R50,000
Any contravention with a Method Statement (per incident)	R5,000
Repeated contravention of the specifications or failure to comply with instructions (per incident)	R5,000

NOTE: THE SUBJECTION AND PAYMENT OF A PENALTY DOES NOT ABSOLVE THE CONTRACTOR FROM FULLY REMEDYING ANY TRANSGRESSION OR ENVIRONMENTAL DAMAGE. SHOULD THE CONTRACTOR FAIL TO ADDRESS HIS NON-CONFORMANCE, ESKOM HAS THE RIGHT TO REMEDY THE INCIDENT AND RECOVER THE COSTS FROM THE CONTRACTOR.

ANNEXURE 5



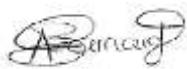
INCIDENT AND ENVIRONMENTAL LOG

ENVIRONMENTAL INCIDENT LOG				
Date	Env. Condition	Comments <i>(Include any possible explanations for current condition and possible responsible parties. Include photographs, records etc. if available)</i>	Corrective Action Taken <i>(Give details and attach documentation as far as possible)</i>	Signature

Document Control

Form IP180_B

CLIENT : Eskom Holdings (SOC) Ltd, Eskom Distribution – Gauteng Operating Unit (Eskom)
 PROJECT NAME : Pelly-Fairfield 132kV Powerline
 PROJECT NO : J34156
 TITLE OF DOCUMENT : J34156 Pelly-Fairfield 132kV EMP
 ELECTRONIC LOCATION : [J34152 Pelly-Fairfield 132kV EMP v1 2015.03.16.docx](#)

	Approved By	Reviewed By	Prepared By
ORIGINAL	NAME Umeshree Naicker	NAME Umeshree Naicker	NAME Alecia Barnard
DATE 2015/03/18	SIGNATURE 	SIGNATURE 	SIGNATURE 

This report, and information or advice, which it contains, is provided by GIBB (or any of its related entities) solely for internal use and reliance by its Client in performance of GIBB's duties and liabilities under its contract with the Client. Any advice, opinions, or recommendations within this report should be read and relied upon only in the context of the report as a whole. The advice and opinions in this report are based upon the information made available to GIBB at the date of this report and on current South African standards, codes, technology and construction practices as at the date of this report. Following final delivery of this report to the Client, GIBB will have no further obligations or duty to advise the Client on any matters, including development affecting the information or advice provided in this report. This report has been prepared by GIBB in their professional capacity as Consulting Engineers. The contents of the report do not, in any way, purport to include any manner of legal advice or opinion. This report is prepared in accordance with the terms and conditions of the GIBB contract with the Client. Regard should be had to those terms and conditions when considering and/or placing any reliance on this report. Should the Client wish to release this report to a Third Party for that party's reliance, GIBB may, at its discretion, agree to such release provided that:

- (a) GIBB's written agreement is obtained prior to such release, and
- (b) By release of the report to the Third Party, that Third Party does not acquire any rights, contractual or otherwise, whatsoever against GIBB and GIBB, accordingly, assume no duties, liabilities or obligations to that Third Party, and
- (c) GIBB accepts no responsibility for any loss or damage incurred by the Client or for any conflict of GIBB interests arising out of the Client's release of this report to the Third Party.

GIBB (Pty) Ltd Website : www.gibb.co.za

Postal Address : P.O. Box 2700, Rivonia, 2191 Physical Address : 14 Eglin Road, Sunninghill, 2191

Contact Person : U Naicker Email Address : unaicker@gibb.co.za

Telephone No. : 011 519 4701 Fax No. : 011 807 5670